

Laundry and Dishwashing Product Range

Updated 04.2017

Miele
PROFESSIONAL

Miele

PROFESSIONAL

Contents

Our product range. 03
 Quality & reliability. 04
 Innovation. 05
 Performance. 06
 Usability. 07
 Environment. 8-9
 Service. 10
 Our attention to detail. 11
 Washer-extractors. 12
 Tumble Dryers. 18
 Ironers. 24
 Dishwashers. 30

Miele Professional commercial laundry and dishwasher product range.

<p>12-17 Washer-extractors</p> <p>LITTLE GIANTS 14 PW 5062 PW 6055 Vario PW 6065 Vario PW 5064 Mopstar 60</p> <p>8-10 KG 15 PW 6080 Vario PWT 6089 Vario PW 5105 Vario</p> <p>11-32 KG 16 PW 811 PW 413 PW 413 Mopstar 130 PW 814 PW 418 PW 818 PW 6241 PW 6321</p> <p>BARRIER WASHERS 17 PW 6163 PW 6243 PW 6323</p>	<p>18-23 Tumble Dryers</p> <p>LITTLE GIANTS 20 PT 5135 C PT 5137 WP PT 7135 C Vario PT 7136 Vario PT 7137 WP</p> <p>8-10KG 21 PT 7186 Vario PT 8203 WP</p> <p>10-13 KG 21 PT 8253 PT 8257 PT 8257 WP</p> <p>12-15 KG 21 PT 8301 PT 8303</p> <p>13-16 KG 22 PT 8333 PT 8337 PT 8337 WP</p> <p>16-20 KG 22 PT 8403 PT 8407</p> <p>20-25 KG 23 PT 8503 PT 8507</p> <p>32-40KG 23 PT 8803 PT 8807</p>	<p>24-29 Ironers</p> <p>Roller Diameter:</p> <p>160-250 mm 26 HM 16-80 HM 16-83 PM 1210 PM 1214 PM 1217</p> <p>300-400 mm 27 PM 1318 PM 1418 PM 1421</p> <p>585 mm 28 PM 1621 PM 1625 PM 1630 PM 1635</p> <p>790 mm 29 PM 1825 PM 1830 PM 1835</p>	<p>30-34 Dishwashers</p> <p>PROFILINE 32 PG 8080 PG 8080 U PG 8081 i PG 8082 SCi PG 8083 SCVi</p> <p>PROFESSIONAL 33 PG 8055 - Speed PG 8056 - Speed Plus PG 8058 - Brilliant PG 8059 - Hygiene</p> <p>TANK 34 PG 8164 - BrilliantCompact PG 8165 - UniversalCompact PG 8166 - Universal PG 8172 - Performance</p>
---	--	--	--





Quality and reliability

An investment in Miele results in long-term cost savings and peace of mind.



We rigorously endurance test all our products. Our laundry products are tested to run for up to 30,000 hours

We know that when you are running a business you do not want to have to worry about your washing machine breaking down, or your dishwasher not delivering spotless results - that is why the quality and reliability of our products is so important to us.

At Miele we are renowned for the build quality of our range and we rigorously endurance test all of our products during their development. When we say rigorously we really do mean it, for example our laundry products are tested to run for up to 30,000 hours - that is a lot of clean sheets, towels or mop heads. Every product we manufacture goes through an end-of-line test too, before passing quality control; we pay attention to the details so that you don't have to.

We are committed to our products, response times, deliveries and installs being correct first time. All of this means machines that deliver outstanding reliability, long product lifecycles and low running costs. An investment in Miele results in long-term cost savings and peace of mind.



When you buy a Miele machine you benefit from innovative, intelligent solutions that deliver reliable results.

Innovation

Innovation has been at the heart of Miele's success for over 100 years

Innovation has been at the heart of Miele's success for over 100 years; from the first fully automatic washing machine to the latest energy and water saving technology, we lead the way. When you buy a Miele machine you benefit from innovative, intelligent solutions that deliver reliable results.

Our drive to innovate is independently recognized too - we've won awards for everything from design through to the way we apply technology. When we design a new machine we think about how we can make it better - the details we can change to improve performance, increase efficiency and deliver the best results.

Innovation doesn't end with our products either - we're always looking at ways to improve the service we give to our customers, listening to you and being responsive to ensure that we're delivering the products you need.

Designed with performance in mind

Whether you are washing dishes that need to be sparkling, sheets that need to be spotless or have towels that need to be dried to perfection, Miele products are designed with performance in mind.

With a Miele machine optimal results are married with gentle performance, so your investment in the best machines is also an investment in the life of the things you are cleaning - your cutlery stays shiny, mop heads are preserved and textiles can be used for longer.

Across the range our products are regularly independently tested and consistently come out on top. You can see the results for yourself at our Experience Centre in Abingdon, where we will give you a hands-on demonstration of our products in the Professional Test Wash Area.



Across the range our products are regularly independently tested and consistently come out on top.



Simple to use

Whoever is operating your machine, with Miele you will always get the best results, thanks to user interfaces which are set up to be simple to use and to meet individual customer needs.

We'll think about the details - wash temperatures, programme times and optimum programme configuration - which means you don't have to. So if you are always washing tablecloths and napkins then we will make sure you have the best programme at your fingertips, or if your machine needs to tackle dirty crockery then we will have a cycle that will deliver the results you need.

When you buy a new machine we will make sure it is set up so that you can easily access the programmes you will use the most - saving you precious time and ensuring you always get the best results.

When you buy a new machine we will make sure it is set up so that you can easily access the programmes you will use the most





Product development

- Compliance with legislation and directives (e.g. EcoDesign requirements for ErPs)
- Integrated product policy
- Consideration of stakeholder requirements
- Selection of material with an aim to use secondary raw materials and achieve a high recyclability and, as a consequence, great resource efficiency

Production

- Environment and energy management
- Use of best available techniques
- Avoidance of critical substances

Transport and logistics

- Short transport routes
- Transport bundling
- Efficient utilisation of freight space
- Use of low-emission transport

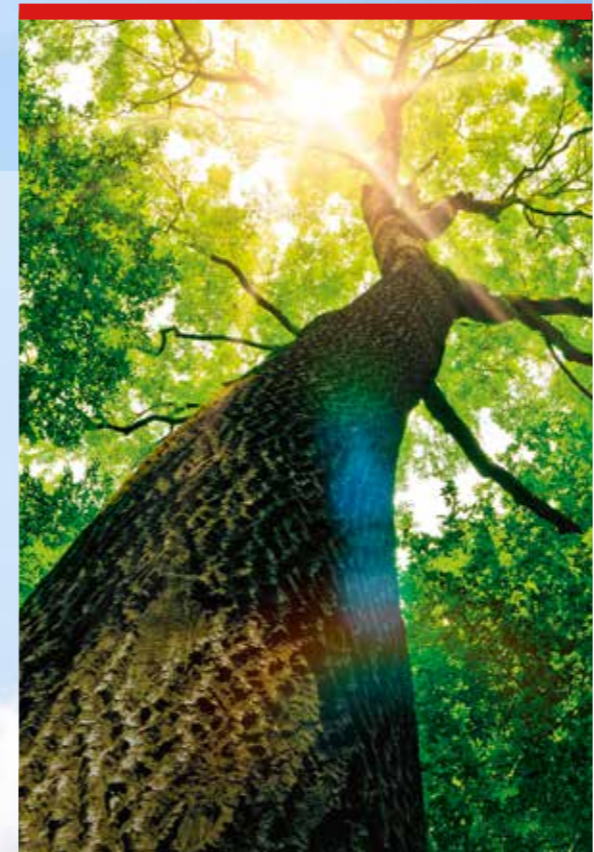
Usage phase

- Low consumption levels
- Long product life
- Qualified maintenance and repair service

Disposal

- Legal compliance (WEEE, RoHS)
- Commitment to optimising recycling processes/increasing recycling quota

Our machines last longer, so you will replace them less often, minimising environmental impact and disposal costs.



Environment

Sustainable, cost effective performance

Because you don't want to worry about the impact of rising energy prices, we have developed all of our products to lead the market for energy and water efficiency. At the heart of all our product design is sustainable, cost-effective performance that achieves optimum results.

Our machines last longer too, so you will replace them less often, minimising environmental impact and disposal costs. When a product does come to the end of its life, most of it is easily recyclable - so from start to finish we are ensuring maximum sustainability.

Our machines offer many characteristics which significantly contribute to sustainability: low consumption (of energy, water and chemical substances), a high proportion of recyclable materials and secondary raw materials and environmentally friendly procedures.

In addition, all European company locations are certified to ISO 9001, ISO14001, OHSAS 18001 and SA 8000 standards.

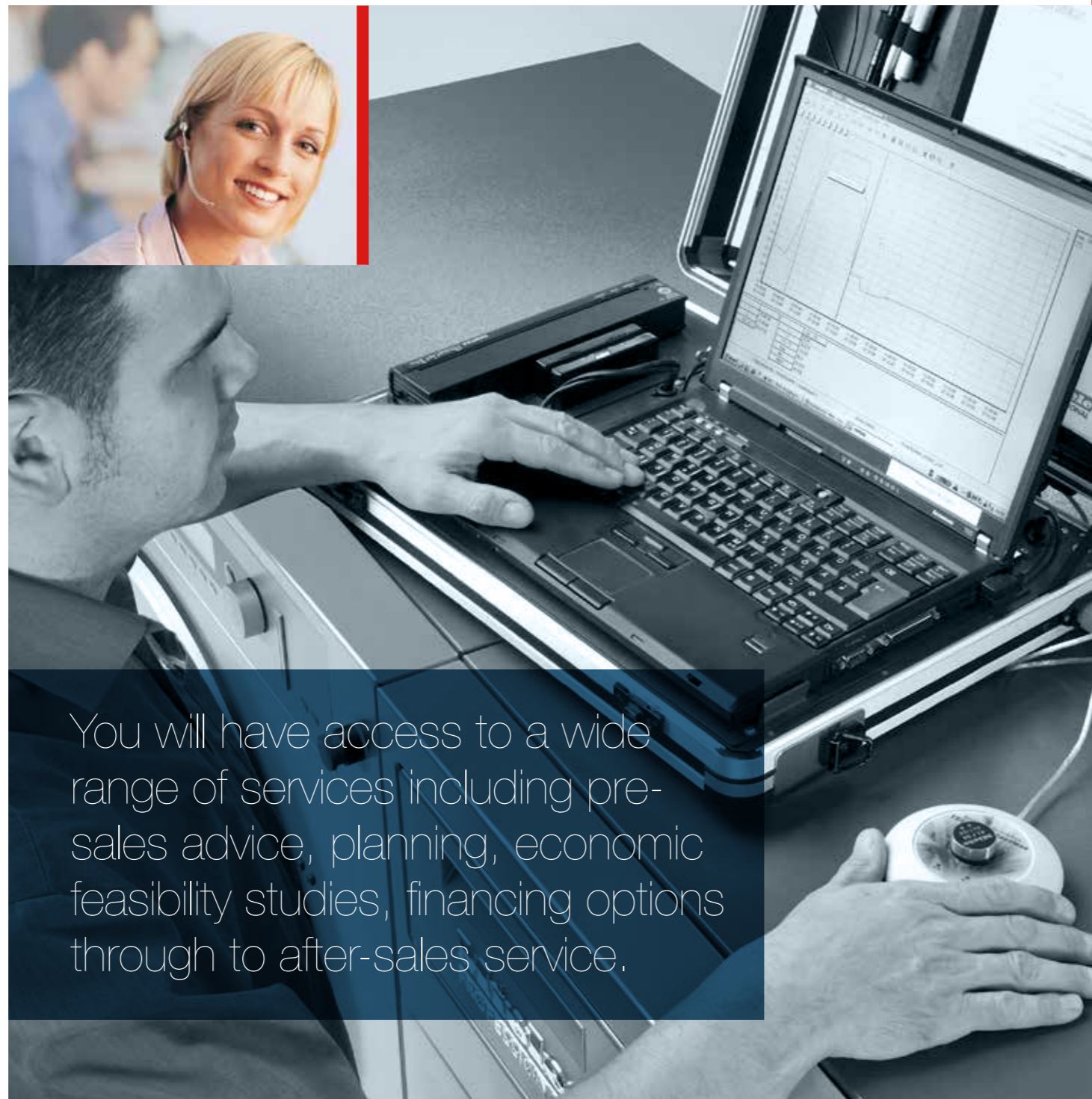
Miele Professional Service

Choose Miele Professional and choose service that is quite simply, second to none.

You will have access to a wide range of services including pre-sales advice, planning, economic feasibility studies, financing options through to after-sales service.

When you are running a busy laundry room or kitchen we know you cannot afford to have machines that are not working. So if things do go wrong we, or one of the Miele Professional Partners, will be with you either the same day or next working day.

If you are planning a new site we realise not every space is the same, so we offer free design consultancy with site visits to advise you on the products you need and tailored plans to help make the most of the space you have. All of our products are dispatched from the UK, so we can ensure quick delivery of models in stock - getting you the products you need, when you need them.



You will have access to a wide range of services including pre-sales advice, planning, economic feasibility studies, financing options through to after-sales service.



Attention to detail throughout the product range

Miele Professional offers a complete range of the highest quality commercial laundry and dishwashing products. No detail in our products is overlooked.

From engineering and programme design, to build quality and innovation, our machines are all tried and tested rigorously by us, and in businesses just like yours all over the world. Our objective is simply to make sure our range includes machines for every need that deliver exceptional results, every day.

At Miele everything we do is guided by our philosophy 'Immer Besser' meaning 'Forever Better'; it was conceived more than 100 years ago by our founders as a mark of Miele's commitment to quality and innovation, and remains as true as ever today. It is our attention to the details that makes the Miele difference.

Washer-extractors

Miele Professional's laundry technology guarantees hygienically clean laundry.

Patented Honeycomb Drum

Ensures the gentle care of fabrics combined with first-class cleaning and drying performance.

Award winning Environmental Technology

All Miele Professional washing machines have recently been approved for inclusion on the Water Technology List for improved water efficiency.

Highest G-Force

A G-Force of up to 526 occurs during extraction, reducing drying times, energy costs and extending the life of the garment.

Large range of capacities catering for a wide market

- 5.5 to 32 kg drum volumes for washer-extractors
- Specially designed machines for washing mops and cloths
- Barrier machines for care homes and hospitals

WRAS Approved

Washing machines are compliant with machinery guidelines and WRAS approved for reassurance.

Barrier Washers

Miele Professional barrier machines offer optimum physical separation between unclean and clean sides in care homes and hospitals, preventing contamination of laundry.

LITTLE GIANTS

PW 5062
PW 6055 Vario
PW 6065 Vario
PW 5064 Mopstar 60

8-10 KG

PW 6080 Vario
PWT 6089 Vario
PW 5105 Vario

11-32 KG

PW 811
PW 413
PW 413 Mopstar 130
PW 814

PW 418
PW 818
PW 6241
PW 6321

BARRIER WASHERS

PW 6163
PW 6243
PW 6323

Control Panels

The variety of Miele interface controls for our products are all designed to be easy to use and ensure maximum efficiency during the cleaning cycle.



Profitronic L Vario:

Electronic controls with multi-function selector and user navigation screen. Programme delay and time left display to enable the user to manage their time efficiently. Wide range of standard programmes as well as a number of special programmes such as table linen, pillows and outerwear and reproofing. Additional feature of four short cut keys for most popular programmes on the Plus version.



Profitronic M:

Electronic controls with multi-function selector and user navigation screen. 199 programme slots. Programme selection via rotary selector or 6 short cut buttons. Freely programmable programme parameters. Clear text display with user navigation.



Profitronic D:

Profitronic D controls provide programmes catering for the entire spectrum of laundry care requirements. A text display and 6 direct-access buttons facilitate ease of use and fast programme selection. The most frequently used programmes are assigned to buttons 1–6 and are accessible at the touch of a single button. Further programmes are accessed by pressing and holding button 6. Important parameters such as temperature and spin speed can be selected manually before the start of each programme. Similarly, current load sizes can be entered to reduce water, energy and detergent consumption accordingly.

WASHER-EXTRACTORS

Little Giants



LITTLE GIANTS

- PW 5062
- PW 6055 Vario
- PW 6065 Vario
- PW 5064 Mopstar 60

8-10 KG

- PW 6080 Vario
- PWT 6089 Vario
- PW 5105 Vario

6.5 kg



5.5 kg



6.5 kg



6.5 kg MOPSTAR



8 kg



10 kg



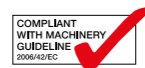
Product Code	PW 5062	PW 6055 Vario	PW 6065 Vario	PW 5064 Mopstar 60	PW 6080 Vario	PWT 6089 Vario	PW 5105 Vario
--------------	---------	---------------	---------------	--------------------	---------------	----------------	---------------

Capacity (kg)	6.5	5.5	6.5	6.5	8	Washer - PWT 6089 8	Dryer - PT 7189 8	10
Dimensions: H/W/D (mm)	850/595/725	850/595/725	850/595/725	850/595/725	1020/700/727	1920/692/763	1920/692/763	1020/700/827
Net Weight (kg)	109	106	109	105	140	240	180	148
Heating	Electric	Electric	Electric	Electric	Electric	Electric	Electric	Electric
Controls	Profiline B Plus	Profitronic L Vario	Profitronic L Vario	Profiline MOP	Profitronic L Vario	Profitronic L Vario	Profitronic L Vario	Profitronic L Vario
Spin Speed (rpm)	1400	1400	1400	1400	1300	1300	-	1100
G Factor	526	526	526	526	520	520	-	370
Residual Moisture (%)	49	49	49	25	49	49	-	54
Drainage	Drain Pump	Drain Pump	Drain Pump or Dump Valve	Dump Valve	Drain Pump or Dump Valve	Drain Pump	-	Drain Pump or Dump Valve
Electric Requirements: 230V	•	•	•	•	•	•	•	•
400V	-	•	•	-	•	•	•	•
Other Comments	Stackable	Stackable	Stackable Available in white or stainless steel*	Stackable Special Programmes for mop head washing	Communication module slot	Communication module slot	Communication module slot	Communication module slot

*Drain pump only

WASHER-EXTRACTORS

11-32 KG



- 11-32 KG**
 PW 811
 PW 418
 PW 413 Mopstar 130
 PW 814
 PW 418
 PW 818
 PW 6241
 PW 6321

- 16-32 KG
 (BARRIER WASHER-EXTRACTORS)**
 PW 6163
 PW 6243
 PW 6323

11-12 kg



13-14 kg



MOPSTAR



14-16 kg



18-20 kg



24 kg



32 kg



16-32 KG Barrier Washer-Extractors

16 kg



24 kg



32 kg



Product Code	PW 811	PW 413	PW 413 Mopstar 130	PW 814	PW 418	PW 818	PW 6241	PW 6321	PW 6163	PW 6243	PW 6323
Capacity (kg)	11-12	13-14	13-14	14-16	18-20	18-20	24	32	16	24	32
Dimensions: H/W/D (mm)	1352/799/940 (827*)	1352/799/1010 (897*)	1352/799/1010 (897*)	1452/924/850 (757*)	1452/924/950 (857*)	1452/924/950 (857*)	1640/1085/1265	1640/1085/1272	1718/1153/1070	1718/1384/1070	1718/1605/1070
Net Weight (kg)	257	266	266	324	379	379	640	648	630	820	860
Heating	Electric or steam	Electric	Electric	Electric or steam	Electric	Electric or steam	Electric, Gas or Steam	Electric, Gas or Steam	Electric, Steam or Dual	Electric, Steam or Dual	Electric, Steam or Dual
Controls	Profitronic M	Profitronic D	Profitronic D Mop	Profitronic M	Profitronic D	Profitronic M	Profitronic M	Profitronic M	Profitronic M	Profitronic M	Profitronic M
Spin Speed (rpm)	1150	1025	1025	1075	950	1075	1100	1000	1025	975	975
G Factor	460	360	360	460	360	460	542	448	400	360	360
Residual Moisture (%)	45	50	>25	45	50	45	46	50	48	50	47
Drainage	Dump Valve	Dump Valve	Dump Valve	Dump Valve	Dump Valve	Dump Valve	Dump Valve	Dump Valve	Dump Valve	Dump Valve	Dump Valve
Electric Requirements: 230V	-	-	-	-	-	-	-	-	-	-	-
400V	•	•	•	•	•	•	•	•	•	•	•
	* Depth by removing panels and protruding parts Communication module slot Data shown is for the electric versions	* Depth by removing panels and protruding parts Communication module slot	* Depth by removing panels and protruding parts Communication module slot Special programmes for mop head washing	* Depth by removing panels and protruding parts Communication module slot Data shown is for the electric versions	* Depth by removing panels and protruding parts Communication module slot	* Depth by removing panels and protruding parts Communication module slot Data shown is for the electric versions	Data shown is for the electric versions	Data shown is for the electric versions			

Tumble Dryers

Miele Professional's laundry technology guarantees hygienically clean laundry.

Patented Honeycomb Drum

Ensures the gentle care of fabrics combined with first-class cleaning and drying performance.

Highest G-Force

A G-Force of up to 526 occurs during extraction, reducing drying times, energy costs and extending the life of the garment.

Residual Moisture Control Dryers

Accurate sensors that measure moisture in the garments to reduce drying times and lower energy costs.

Large range of capacities catering for a wide market

- 6.5 to 40 kg drum volumes for dryers

Award winning Environmental Technology

New and innovative Heat Pump dryers and H₂O dryers reduce energy costs by over 50%.

H₂O Dryers

The H₂O dryer can be put to use wherever water is heated. This can take the form of an on-site cogeneration plant, district heating or alternative sources of energy where hot water is a by-product.

Control Panels

The variety of Miele interface controls for our products are all designed to be easy to use and ensure maximum efficiency during the drying cycle.

LITTLE GIANTS

PT 5135 C
PT 5137 WP
PT 7135 C Vario
PT 7136 Vario
PT 7137 WP

8-10KG

PT 7186 Vario
PT 8203 WP

10-13 KG

PT 8253
PT 8257
PT 8257 WP

12-15 KG

PT 8301
PT 8303

13-16 KG

PT 8333
PT 8337
PT 8337 WP

16-20 KG

PT 8403
PT 8407

20-25 KG

PT 8503
PT 8507

32-40KG

PT 8803
PT 8807



Profitronic B Plus:

Electronic controls with rotary selector. Residual display showing selected drying time/time remaining and residual moisture level. Programme sequence indicators show heat up, cool down, anti-crease. Adjustable programme parameters such as reversing times and residual moisture level.



Profitronic L Vario:

Electronic controls with multi-function selector and user navigation screen. Programme delay and time left display to enable the user to manage their time efficiently. Wide range of standard programmes as well as a number of special programmes such as table linen, pillows and outerwear and reproofing. Additional feature of four short cut keys for most popular programmes on the Plus version.



Profitronic M:

Electronic controls with multi-function selector and user navigation screen. 199 programme slots. Programme selection via rotary selector or 6 short cut buttons. Freely programmable programme parameters. Clear text display with user navigation.

TUMBLE DRYERS

Little Giants



8-10 KG



10-13 KG



12-15 KG

LITTLE GIANTS

PT 5135 C
PT 5137 WP
PT 7135 C VARIO
PT 7136 VARIO
PT 7137 WP

8-10KG

PT 7186 Vario
PT 8203 WP

10-13 KG

PT 8253
PT 8257
PT 8257 WP

12-15 KG

PT 8301
PT 8303

6.5 kg



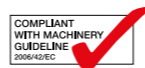
Product Code	PT 5135 C	PT 5137 WP	PT 7135 C Vario	PT 7136 Vario	PT 7137 WP	PT 7186 Vario	PT 8203 WP SlimLine	PT 8253	PT 8257*	PT 8257 WP	PT 8301 SlimLine	PT 8303 SlimLine
Capacity (kg)	6.5	6.5	6.5	6.5	6.5	8	8-10*	10-13	10-13	10-13*	12-15	12-15
Dimensions: H/W/D (mm)	850/595/710	850/595/727	850/595/710	850/595/710	850/595/727	1020/700/763	1800/711/1075	1400/906/852	1400/906/852	1400/906/1218	1800/711/1089	1800/711/1089
Net Weight (kg)	60	77	61	58	77 (79 stainless steel)	77	202	149	149	148	139(EL) /145(G)	139(EL) /145(G)
Heating	Electric	Electric	Electric	Electric	Electric	Electric, Gas	Electric	Electric or Gas	Electric or Gas	Electric	Electric or Gas	Electric or Gas
Controls	Profiline L	Profiline L	Profitronic L Vario	Profitronic L Vario	Profitronic L Vario	Profitronic L Vario	Profitronic B Plus	Profitronic B Plus	Profitronic M	Profitronic M	Profitronic B	Profitronic B Plus
Electric Requirements: 230V	•	•	•	•	•	•	-	• (Gas)	• (Gas)	-	-	-
400V	-	-	-	•	-	•	•	• (Electric)	• (Electric)	•	•	•
Other Comments	Available in white Stackable Condenser model	Available in white Stackable Heat Pump model	Available in white or stainless steel Stackable Condenser model	Available in white or stainless steel Stackable Vented model	Available in white or stainless steel Stackable Heat Pump model	Vented model Available in blue or stainless steel	Heat Pump integrated	Communication module slot Blue Vented	Communication module slot Blue (Gas only)/ Stainless Steel Vented	Heat-Pump unit dimensions (H/W/D): 1370/906/433	Vented model COP models available	Vented model
							*1:25 - 1:20kg		*Image shown	* 1:25 - 1:20kg		

TUMBLE DRYERS

13-16 KG



16-20 KG



20-25 KG



32-40 KG



13-16 KG

PT 8333
PT 8337
PT 8337 WP

16-20 KG

PT 8403
PT 8407

25-25 KG

PT 8503
PT 8507

32-40KG

PT 8803
PT 8807



Product Code	PT 8333	PT 8337*	PT 8337 WP	PT 8403	PT 8407*	PT 8503	PT 8507	PT 8803	PT 8807*
Capacity (kg)	13-16	13-16	13-16*	16-20	16-20	20-25	20-25	32-40	32-40
Dimensions: H/W/D (mm)	1400/906/1035	1400/906/1035	1400/906/1401	1400/906/1164	1400/906/1164	1640/1206/1018	1640/1206/1018	1640/1206/1384	1640/1206/1384
Net Weight (kg)	166 (EL), 169 (G, HW)	166 (EL), 169 (G, HW)	164	192 (EL), 190 (G), 217 (S, HW)	192 (EL), 190 (G), 217 (S, HW)	239 (EL), 240 (G), 265 (S, HW)	239 (EL), 240 (G), 265 (S, HW)	286 (EL), 287(G), 318 (S,HW)	287 (EL,G), 318 (S,HW)
Heating	Electric, Gas or HW	Electric, Gas or HW	Electric	Electric, Gas, Steam or HW	Electric, Gas, Steam or HW	Electric, Gas, Steam or HW	Electric, Gas, Steam or HW	Electric, Gas, Steam or HW	Electric, Gas, Steam or HW
Controls	Profitronic B Plus	Profitronic M	Profitronic M	Profitronic B Plus	Profitronic M	Profitronic B Plus	Profitronic M	Profitronic B Plus	Profitronic M
Electric Requirements: 230V	• (Gas)	• (Gas)	-	-	-	-	-	-	-
400V	• (Electric)	• (Electric)	•	•	•	•	•	•	•
Other Comments	Communication module slot Vented with AirRecycling system HW (Hot Water) version for H ₂ O model	Communication module slot Vented with AirRecycling system HW (Hot Water) version for H ₂ O model	Heat-Pump unit dimensions (H/W/D): 1370/906/433 * 1:25 - 1:20kg	Communication module slot Vented with AirRecycling system HW (Hot Water) version for H ₂ O model	Communication module slot Vented with AirRecycling system HW (Hot Water) version for H ₂ O model	HW (Hot Water) version for H ₂ O model	Communication module slot HW (Hot Water) version for H ₂ O model	Communication module slot HW (Hot Water) version for H ₂ O model	Communication module slot HW (Hot Water) version for H ₂ O model
		*Image shown			*Image shown				*Image shown

Commercial Ironers

Smooth, crease-free finish

Optimum laundry finish

Miele rotary ironers are just the machines for a perfect finish on workwear and table linen: simple, fast and economical. In hotels and restaurants, perfectly laundered textiles help keep up appearances. Alongside guaranteeing a perfect finish, rotary ironers are above all simple and safe to use. Roller speed is infinitely selected using a rotary selector. Roller rotation can be stopped at any time by pressing the footswitch. The ARAMID cloth and the aluminium trough ensure efficient results.

The patented automatic finger guard stops the roller in its tracks and retracts the heater plate in the event that anything enters the gap between the roller and the trough. During power failures, the heater plate can be released easily to remove trapped items.

High Performance

Our high-performance flatwork ironers are able to process more than 200 kg of laundry per hour, equating to more than a tonne of laundry per day. These large ironers can be controlled and monitored from their central display, making them safe and easy to use. Contact pressure, temperatures and roller speeds are all selectable and can be saved with password protected user levels. The display also shows cleaning and waxing reminders when due.

Model designations PM 16 and PM 18 are available with electric, gas and steam heating and the touch display shows all the machine parameters at a single glance, allowing the ironer to adapt fast to everyday working conditions.

Key Features

Rotary Ironers

Miele offers a range of rotary ironers for small laundry operations tailored to the quantity of laundry being processed and to the customer's need. The compact ironers can be placed against a wall to save space.

Flatwork Ironers

Large volumes of laundry produced by hotels, hospitals and care homes can be conveniently and easily processed by a Miele flatwork ironer.

160-250 mm

HM 16-80
HM 16-83
PM 1210
PM 1214
PM 1217

300-400 mm

PM 1318
PM 1418
PM 1421

585 mm

PM 1621
PM 1625
PM 1630
PM 1635

790 mm

PM 1825
PM 1830
PM 1835

IRONERS

Rotary Ironers

Flatwork Ironers

Flatwork Ironers

160-250 mm

HM 16-80
HM 16-83
PM 1210
PM 1214
PM 1217

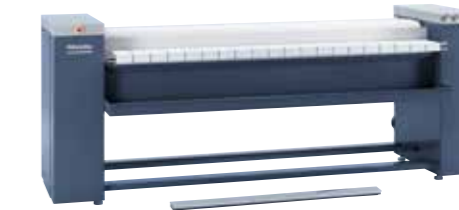
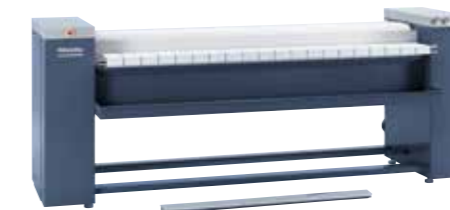
300-400 mm

PM 1318
PM 1418

160-250 mm



300-365 mm



Product Code	HM 16-80	HM 16-83	PM 1210	PM 1214	PM 1217	PM 1318	PM 1418
Roller diameter (mm)	160	160	210	210	250	300	365
Roller width (mm)	830	830	1000	1400	1660	1750	1750
Heater plate	Electric	Electric	Electric	Electric	Electric	Electric or Gas	Electric or Gas
Throughput according to DIN 11902 (kg/h):							
Residual moisture 15%			30				
Residual moisture 20%	13	15					
Residual moisture 25%				33	60	75(EL)/53.7 (G)	90
Electric Requirements: 230V	•	•	•	-	-	-	•
400V	-	-	•	•	•	•	1318/2576/1150
External dimensions H/W/D (mm)	959/985/380	960/1050/380	1032/1579/476	1032/1979/650	1110/2238/650	1318/2576/1150	Through feed (option of return feed module for existing machines)
Other comments	Folding frame Steam Facility Return Feed	Return Feed	Return Feed	Return Feed	Return Feed and Through Feed	Through feed (option of return feed module for existing machines) Return feed (new machines, electric model only)	Return feed (new machines, electric model only)

WASHER EXTRACTORS

TUMBLE DRYERS

26-27

IRONERS

DISHWASHERS

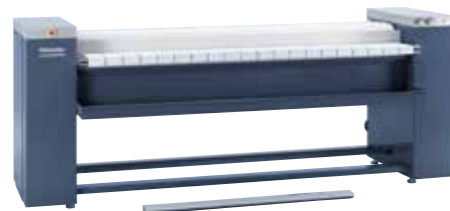
IRONERS

300-400 mm
PM 1421

600-800 mm
PM 1621
PM 1625
PM 1630
PM 1635
PM 1825
PM 1830
PM 1835

Flatwork Ironers

365 mm



585 mm



Flatwork Ironers

790 mm



Product Code	PM 1421	PM 1621	PM 1625	PM 1630	PM 1635	PM 1825	PM 1830	PM 1835
Roller diameter (mm)	365	585	585	585	585	790	790	790
Roller width (mm)	2040	2100	2500	3000	3500	2500	3000	3500
Heater plate	Electric or Gas	Electric or Gas	Electric, Gas or Steam	Electric, Gas or Steam	Electric, Gas or Steam	Electric, Gas, Steam	Electric, Gas or Steam	Gas or Steam
Throughput according to DIN 11902 (kg/h):								
Residual moisture 25%	96(EL)/70 (G)	115 (E/G)	130(EL,G)/135(S)	145(EL,G)/165(S)	160(EL,G)/190(S)	165 (EL,G,S)	200 (EL,G,S)	235 (G/S)
Electric Requirements: 230V	-	-	-	-	-	-	-	-
400V	•	•	•	•	•	•	•	•
External dimensions H/W/D (mm)	1318/2866/1150	1970/3290/1840	1970/3690/1840	1970/4190/1840	1970/4690/1840	1970/3690/2044	1970/4190/2044	1970/4690/2044
Other comments	Through feed (option of return feed module for existing machines) Return feed (new machines, electric model only)							

Dishwashers

Miele Professional's range of commercial dishwashers meet the needs of the most stringent commercial and care environments

Efficient

Extremely short programme cycles capable of completing full freshwater wash cycles in as little as 5 minutes.

Environmentally friendly

Intelligent programmes can be customised to optimise energy and water consumption.

High performance

Miele's unique freshwater system operates with fresh water in every cleaning cycle achieving high hygienic standards and low energy usage. Hygienic cleanliness is achieved with high rinse temperatures in excess of 80 degrees.

Dependable

All machines are compliant with machinery guidelines and the freshwater dishwashers are WRAS approved for reassurance.

Recommended

Our dishwashers are recommended by Riedel as the perfect machines to wash their delicate glassware.

Key Features

Profiline:

The ProfiLine dishwashers have short cycle times, high cleaning performance and are easy to use, making them perfect for use in offices, showrooms and even private households with large quantities of crockery

Professional:

The **PG 8055 SPEED** and **PG 8056 SPEEDPlus** are the fastest commercial dishwashers using the fresh water circulation system and are ideal for hotels, restaurants, clubs and schools. With its shortest wash cycle of just 5 minutes it can wash up to 456 plates an hour.

The **PG 8058 BRILLIANT** produces perfect wash results with a sparkling finish, dispensing with the need to polish glassware and cutlery if supplied from a RO water system. This feature combined with the fresh water circulation system are unique to Miele Professional.

The **PG 8059 HYGIENE** dishwashers with its uncompromising cleaning system provides exceptionally high standards of hygiene making it ideal for hospitals, nursing homes and nursery schools.

Tank:

Miele Professional Tank system dishwashers have fast cycle times with a maximum theoretical throughput of up to 3234 glasses or 1296 plates per hour, making them perfect for the demands placed on hotels, restaurants, pubs and bars.

PROFILINE

PG 8080
PG 8080 U
PG 8081 i
PG 8082 SCi
PG 8083 SCVi

PROFESSIONAL

PG 8055 - Speed
PG 8056 - Speed Plus

PG 8058 - Brilliant

PG 8059 - Hygiene

TANK

PG 8164 - BrilliantCompact
PG 8165 - UniversalCompact
PG 8172 - Performance
PG 8166 - Universal

 **SPEED**

 **BRILLIANT**

 **HYGIENE**

 **BRILLIANTcompact**

 **PERFORMANCE**

 **UNIVERSALcompact**

 **UNIVERSAL**

DISHWASHERS

ProfilLine Dishwashers



PROFILINE

- PG 8080
- PG 8080 U
- PG 8081 i
- PG 8082 SCi
- PG 8083 SCVi

PROFESSIONAL

- PG 8055
- PG 8056
- PG 8059
- PG 8058



Professional Dishwashers



Product Code	PG 8080	PG 8080 U	PG 8081 i	PG 8082 SCi	PG 8083 SCVi	PG 8055	PG 8056	PG 8058	PG 8059
Dimensions: H/W/D (mm)	845/598/600	805/598/570	805/598/570	845/598/570	845/598/570	835/600/600	835/600/600	835/600/600	835/600/600
Net Weight (kg)	62	54	55	56	56	63	63	63	63
Type	Freestanding unit	Built under unit without lid	Integrated unit	Integrated unit	Fully integrated	Freestanding unit	Freestanding unit or built under (PG 8056U)	Freestanding unit	Freestanding unit
Dishwashing system	Freshwater system	Freshwater system	Freshwater system	Freshwater system	Freshwater system	Freshwater system	Freshwater system	Freshwater system	Freshwater system
Shortest programme cycle (mins)	18 (32A model)	18 (32A model)	18	19	19	9	6 at 55°C	6 at 55°C	6 at 85°C
Plate capacity (plates/h)	13	13	13	14	14	200	380	380	380
Dishwashing programmes	9	9	9	9	9	9	11	11	11
Final rinse temperature	75°C	75°C	75°C	75°C	75°C	70°C	70°C	85°C	85°C
Door lock	Auto Open	Auto Open	Auto Open	Auto Open	Auto Open	Easy Open	Easy Open	Auto Open	Auto Open

WASHER EXTRACTORS

TUMBLE DRYERS

32-33

IRONERS

DISHWASHERS

DISHWASHERS

Tank Dishwashers



TANK

- PG 8164
- PG 8165
- PG 8166
- PG 8172



Product Code	PG 8164	PG 8165	PG 8166	PG 8172
Dimensions: H/W/D (mm)	725(760)/460/617	725(760)/600/617	820(855)/600/617	1515 (1995) /635/750
Type	Freestanding/built under	Freestanding/built under	Freestanding/built under	Freestanding/Throughfeed
Dishwashing system	Tank system	Tank system	Tank system	Tank system
Shortest programme cycle (secs)	45	55	55	50
Capacity /hr	1600 glasses or 600 plates	3234 glasses or 882 plates	1188 plates	1296 plates
Baskets/hr	80	66	66	72
Dishwashing programmes	3 + 4 additional programmes	3 + 4 additional programmes	3 + 4 additional programmes	3 + additional programmes





Enjoy a Miele Experience

If you want to see our products in action, or find out more about the right solution for your needs from our experts then visit the Miele Experience Centre at our Head Office in Abingdon. We can guide you through the range and give you the advice you need to select the equipment that is right for you.

You can see the results for yourself with a hands-on demonstration of our products in the Professional Test Area, we can prove the difference a Miele makes. Contact us to book an appointment at the Experience Centre.

Miele
PROFESSIONAL

The Miele Company Limited
Fairacres
Marcham Road
Abingdon
OX14 1TW

0845 365 6608
miele-professional@miele.co.uk
www.miele.co.uk/professional

Miele Professional reserves the right to change the machines and specification at anytime, without prior notice. All information printed is only for information and never legally binding.